

THE POINT AT CANYON DEL RIO

COMMUNITY INCLUDED FEATURES

INTERIOR OF THE HOME

SATIN NICKEL TRIM-HARDWARE & BLACK OR SATIN NICKEL LIGHT FIXTURES

8' TWO PANEL SHAKER INTERIOR DOORS

1-TONE INTERIOR PAINT

PAINT GRADE CRAFTSMAN BASEBOARDS

PAINT GRADE CRAFTSMAN DOOR CASING

STANDARD SKIP TROWEL DRYWALL TEXTURE & SQUARE CORNERS

DRYWALL WINDOW WRAP

DECORA SWITCHES

10' CEILINGS ON MAIN FLOOR, 9' CEILINGS ON OTHERS

LAMINATE FLOORING IN ENTRY, GREAT ROOM, KITCHEN, PANTRY, & DINING

CARPET IN BEDROOMS, CLOSETS, LOFTS, STUDY, STAIRWAYS, 2ND FLOOR HALLWAYS, AND FAMILY ROOMS

TILE IN LAUNDRY & FULL BATHROOMS

EXTERIOR OF THE HOME

LAP AND BOARD AND BATTEN SIDING

3 COLOR EXTERIOR COLOR SCHEME

LANDSCAPE ROCK WITH IRRIGATION SYSTEM IN FRONT YARD

PAVER DRIVEWAYS, WALKWAYS, & PATIOS

WHITE EXTERIOR & INTERIOR
LOW-E VINYL WINDOWS

METAL GARAGE DOOR WITH WINDOW INSERTS

8' 4-LITE FIBERGLASS FRONT DOOR

BLACK ASPHALT SHINGLES

METAL FENCING TO BE DETERMINED BY HOMEBUILDER
DESIGN GUIDELINES



CALL TODAY FOR MORE INFORMATION: (855) 928-1100

* ALL AREAS, DIMENSIONS, AND FINISHES ARE APPROXIMATE AND SUBJECT TO CHANGE WITHOUT NOTICE.
VALLEY PEAKS REALTY Arizona Broker # BR679355000. LIC # LC638308005. ROC #255594, #244985. Updated 09.23.25



THE POINT AT CANYON DEL RIO

COMMUNITY INCLUDED FEATURES

KITCHEN FEATURES

STAINLESS STEEL APPLIANCE PACKAGE
– GAS RANGE, MICROWAVE HOOD,
& DISHWASHER

RECESS CAN LIGHTING

STAINLESS STEEL, 60/40 UNDER-MOUNT
SINK WITH STAINLESS STEEL SINK FAUCET

STAINED SHAKER CABINETS WITH CROWN
MOULDING

36" UPPER AND LOWER KITCHEN CABINETS

GRANITE COUNTERTOPS

BATHROOM FEATURES

GRANITE COUNTERTOPS

1 OVAL UNDERMOUNT SINK IN EACH BATHROOM,
2 IN MASTER BATH

SATIN NICKEL PLUMBING FIXTURES

TILE SURROUND SHOWER WITH PONY WALL IN
MASTER BATH

FIBERGLASS TUB/SHOWER INSERTS IN SECONDARY
BATHROOMS

GREEN APPROVED CABINETS

LARGE FRAMELESS MIRRORS

ENERGY EFFICIENT FEATURES

OPEN CELL SPRAY FOAM INSULATION IN
EXTERIOR WALLS AND ATTIC AT LIVABLE
AREAS

95%+ EFFICIENT FURNACE & AIR
CONDITIONING SYSTEM

EXHAUST FANS IN BATHROOMS &
LAUNDRY ROOM

CAR CHARGER OUTLET IN GARAGE

HIGH EFFICIENCY TANKLESS WATER HEATER WITH
RECIRC PUMP

GAS DRYER AND RANGE HOOKUP

ENERGY RECOVERY VENTILATOR (ERV)

LOW VOC PAINT

PREWIRE FOR SOLAR PANELS

ENERGY STAR RATED APPLIANCES

JUMPER DUCTS

WIFI PROGRAMMABLE DUAL-ZONE THERMOSTATS



CALL TODAY FOR MORE INFORMATION: (855) 928-1100

* ALL AREAS, DIMENSIONS, AND FINISHES ARE APPROXIMATE AND SUBJECT TO CHANGE WITHOUT NOTICE.
VALLEY PEAKS REALTY Arizona Broker # BR679355000. LIC # LC638308005. ROC #255594, #244985. Updated 09.23.25



CANYON DEL RIO PLAN 1821

1,821 S.F.

3 BEDROOM

2.5 BATHROOM

2-CAR GARAGE



CALL TODAY FOR MORE INFORMATION: (855) 928-1100

* ALL AREAS, DIMENSIONS, AND FINISHES ARE APPROXIMATE AND SUBJECT TO CHANGE WITHOUT NOTICE.
VALLEY PEAKS REALTY Arizona Broker # BR679355000. LIC # LC638308005. ROC #255594, #244985. Updated 09.23.25



CANYON DEL RIO PLAN 1821

1,821 S.F.

3 BEDROOM
2.5 BATHROOM
2-CAR GARAGE



ELEVATION A



ELEVATION B



CALL TODAY FOR MORE INFORMATION: (855) 928-1100

* ALL AREAS, DIMENSIONS, AND FINISHES ARE APPROXIMATE AND SUBJECT TO CHANGE WITHOUT NOTICE.
VALLEY PEAKS REALTY Arizona Broker # BR679355000. LIC # LC638308005. ROC #255594, #244985. Updated 09.23.25



CANYON DEL RIO PLAN 2128

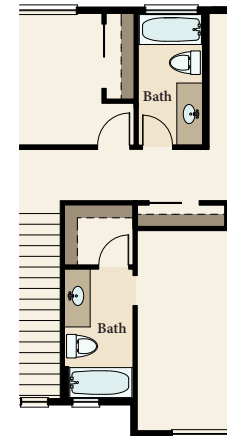
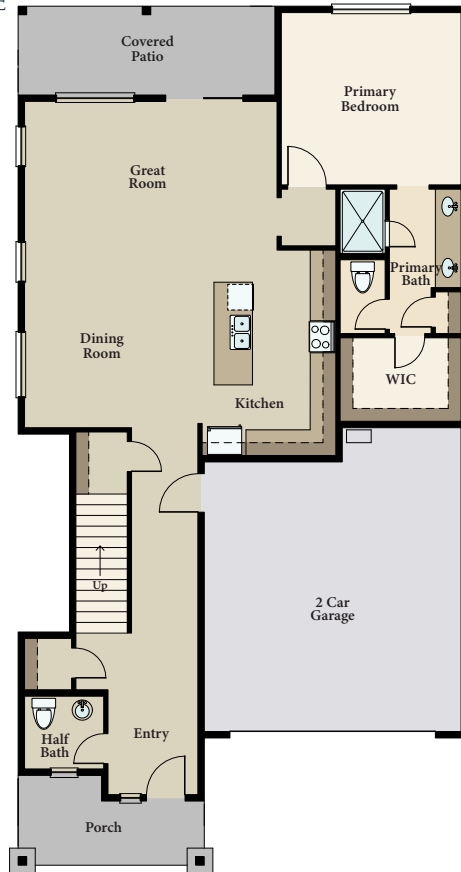
2,128 S.F.

3 BEDROOM

2.5 BATHROOM

LOFT

2-CAR GARAGE



BONUS ADDITIONAL
BATH & SECOND
MASTER BEDROOM



CALL TODAY FOR MORE INFORMATION: (855) 928-1100

* ALL AREAS, DIMENSIONS, AND FINISHES ARE APROXIMATE AND SUBJECT TO CHANGE WITHOUT NOTICE.
VALLEY PEAKS REALTY Arizona Broker # BR679355000. LIC # LC638308005. ROC #255594, #244985. Updated 09.23.25



CANYON DEL RIO PLAN 2128

2,128 S.F.

3 BEDROOM
2.5 BATHROOM
LOFT
2-CAR GARAGE



ELEVATION A



ELEVATION B



CALL TODAY FOR MORE INFORMATION: (855) 928-1100

* ALL AREAS, DIMENSIONS, AND FINISHES ARE APPROXIMATE AND SUBJECT TO CHANGE WITHOUT NOTICE.
VALLEY PEAKS REALTY Arizona Broker # BR679355000. LIC # LC638308005. ROC #255594, #244985. Updated 09.23.25



CANYON DEL RIO PLAN 2354

2,354 S.F.

3 BEDROOM
2.5 BATHROOM
STUDY
2-CAR GARAGE



CALL TODAY FOR MORE INFORMATION: (855) 928-1100

* ALL AREAS, DIMENSIONS, AND FINISHES ARE APROXIMATE AND SUBJECT TO CHANGE WITHOUT NOTICE.
VALLEY PEAKS REALTY Arizona Broker # BR679355000. LIC # LC638308005. ROC #255594, #244985. Updated 09.23.25



CANYON DEL RIO PLAN 2354

2,354 S.F.

3 BEDROOM
2.5 BATHROOM
STUDY
2-CAR GARAGE



ELEVATION A



ELEVATION B



CALL TODAY FOR MORE INFORMATION: (855) 928-1100

* ALL AREAS, DIMENSIONS, AND FINISHES ARE APPROXIMATE AND SUBJECT TO CHANGE WITHOUT NOTICE.
VALLEY PEAKS REALTY Arizona Broker # BR679355000. LIC # LC638308005. ROC #255594, #244985. Updated 09.23.25



CANYON DEL RIO PLAN 2370

2,370 S.F.

3 BEDROOM
3.5 BATHROOM
LOFT
2-CAR GARAGE



FULL BATH
OPTION



CALL TODAY FOR MORE INFORMATION: (855) 928-1100

* ALL AREAS, DIMENSIONS, AND FINISHES ARE APROXIMATE AND SUBJECT TO CHANGE WITHOUT NOTICE.
VALLEY PEAKS REALTY Arizona Broker # BR679355000. LIC # LC638308005. ROC #255594, #244985. Updated 09.23.25



CANYON DEL RIO PLAN 2370

2,370 S.F.

3 BEDROOM
3.5 BATHROOM
LOFT
2-CAR GARAGE



ELEVATION A



ELEVATION B



CALL TODAY FOR MORE INFORMATION: (855) 928-1100

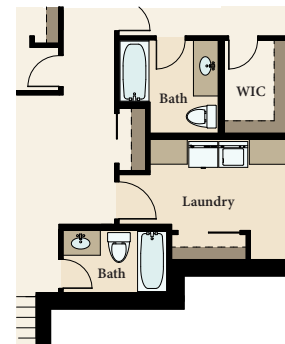
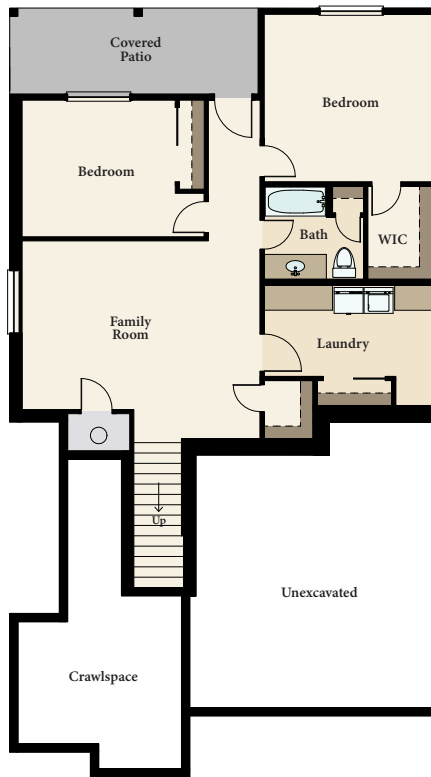
* ALL AREAS, DIMENSIONS, AND FINISHES ARE APPROXIMATE AND SUBJECT TO CHANGE WITHOUT NOTICE.
VALLEY PEAKS REALTY Arizona Broker # BR679355000. LIC # LC638308005. ROC #255594, #244985. Updated 09.23.25



CANYON DEL RIO PLAN 2385

2,385 S.F.

3 BEDROOM
2.5 BATHROOM
FAMILY ROOM
2-CAR GARAGE



BONUS BATH
OPTION



CALL TODAY FOR MORE INFORMATION: (855) 928-1100

* ALL AREAS, DIMENSIONS, AND FINISHES ARE APPROXIMATE AND SUBJECT TO CHANGE WITHOUT NOTICE.
VALLEY PEAKS REALTY Arizona Broker # BR679355000. LIC # LC638308005. ROC #255594, #244985. Updated 09.23.25



CANYON DEL RIO PLAN 2385

2 385 S.F.

3 BEDROOM
2.5 BATHROOM
FAMILY ROOM
2-CAR GARAGE



ELEVATION A



ELEVATION B



CALL TODAY FOR MORE INFORMATION: (855) 928-1100

* ALL AREAS, DIMENSIONS, AND FINISHES ARE APPROXIMATE AND SUBJECT TO CHANGE WITHOUT NOTICE.
VALLEY PEAKS REALTY Arizona Broker # BR679355000. LIC # LC638308005. ROC #255594, #244985. Updated 09.23.25



CANYON DEL RIO PLAN 2469

2,469 S.F.

3 BEDROOM
BATHROOM
FAMILY ROOM
2-CAR GARAGE



CALL TODAY FOR MORE INFORMATION: (855) 928-1100

* ALL AREAS, DIMENSIONS, AND FINISHES ARE APPROXIMATE AND SUBJECT TO CHANGE WITHOUT NOTICE.
VALLEY PEAKS REALTY Arizona Broker # BR679355000. LIC # LC638308005. ROC #255594, #244985. Updated 09.23.25



CH
CAPSTONE
HOMES

CANYON EL RIO PLAN 2469

2 469 S.F.

3 BEDROOM
3 BATHROOM
FAMILY ROOM
2-CAR GARAGE



ELEVATION A



ELEVATION B



CALL TODAY FOR MORE INFORMATION: (855) 928-1100

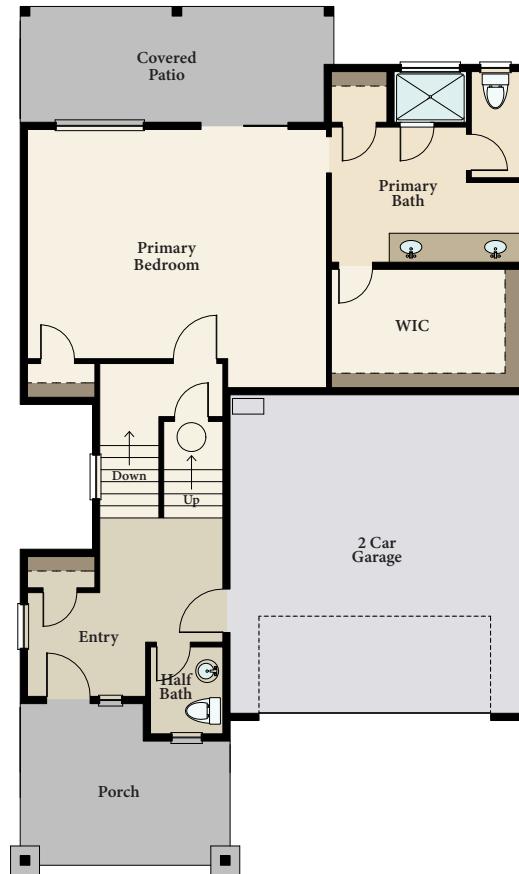
* ALL AREAS, DIMENSIONS, AND FINISHES ARE APROXIMATE AND SUBJECT TO CHANGE WITHOUT NOTICE.
VALLEY PEAKS REALTY Arizona Broker # BR679355000. LIC # LC638308005. ROC #255594, #244985. Updated 09.23.25



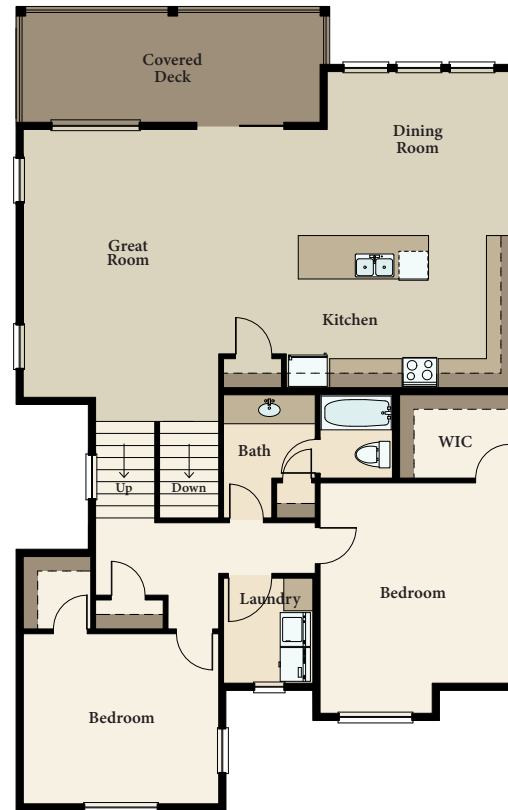
CANYON DEL RIO PLAN 2474

2,474 S.F.

3 BEDROOM
2.5 BATHROOM
2-CAR GARAGE



EXTENDED DECK
OPTION



EXTENDED PATIO
OPTION



CALL TODAY FOR MORE INFORMATION: (855) 928-1100

* ALL AREAS, DIMENSIONS, AND FINISHES ARE APPROXIMATE AND SUBJECT TO CHANGE WITHOUT NOTICE.
VALLEY PEAKS REALTY Arizona Broker # BR679355000. LIC # LC638308005. ROC #255594, #244985. Updated 09.23.25



CANYON DEL RIO PLAN 2474

2,474 S.F.

3 BEDROOM
2.5 BATHROOM
2-CAR GARAGE



ELEVATION A



ELEVATION B



CALL TODAY FOR MORE INFORMATION: (855) 928-1100

* ALL AREAS, DIMENSIONS, AND FINISHES ARE APPROXIMATE AND SUBJECT TO CHANGE WITHOUT NOTICE.
VALLEY PEAKS REALTY Arizona Broker # BR679355000. LIC # LC638308005. ROC #255594, #244985. Updated 09.23.25



CANYON DEL RIO PLAN 2728

2,728 S.F.

3 BEDROOM
3.5 BATHROOM
STUDY
FAMILY ROOM
2-CAR GARAGE



CALL TODAY FOR MORE INFORMATION: (855) 928-1100

* ALL AREAS, DIMENSIONS, AND FINISHES ARE APPROXIMATE AND SUBJECT TO CHANGE WITHOUT NOTICE.
VALLEY PEAKS REALTY Arizona Broker # BR679355000. LIC # LC638308005. ROC #255594, #244985. Updated 09.23.25



CANYON DEL RIO PLAN 2728

2,728 S.F.

3 BEDROOM
3.5 BATHROOM
STUDY
FAMILY ROOM
2-CAR GARAGE



ELEVATION A



ELEVATION B

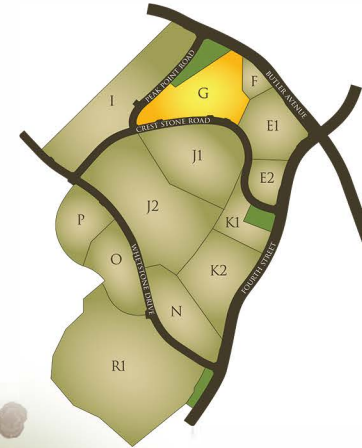


CALL TODAY FOR MORE INFORMATION: (855) 928-1100

VALLEY PEAKS REALTY Arizona Broker # BR679355000. LIC # LC638308005. ROC #255594, #244985. Updated 09.23.25



THE POINT AT CANYON DEL RIO



CALL TODAY FOR MORE INFORMATION: (855) 928-1100

* ALL AREAS, DIMENSIONS, AND FINISHES ARE APROXIMATE AND SUBJECT TO CHANGE WITHOUT NOTICE.
VALLEY PEAKS REALTY Arizona Broker # BR679355000. LIC # LC638308005. ROC #255594, #244985. Updated 09.23.25

